

ATHENA GOLD

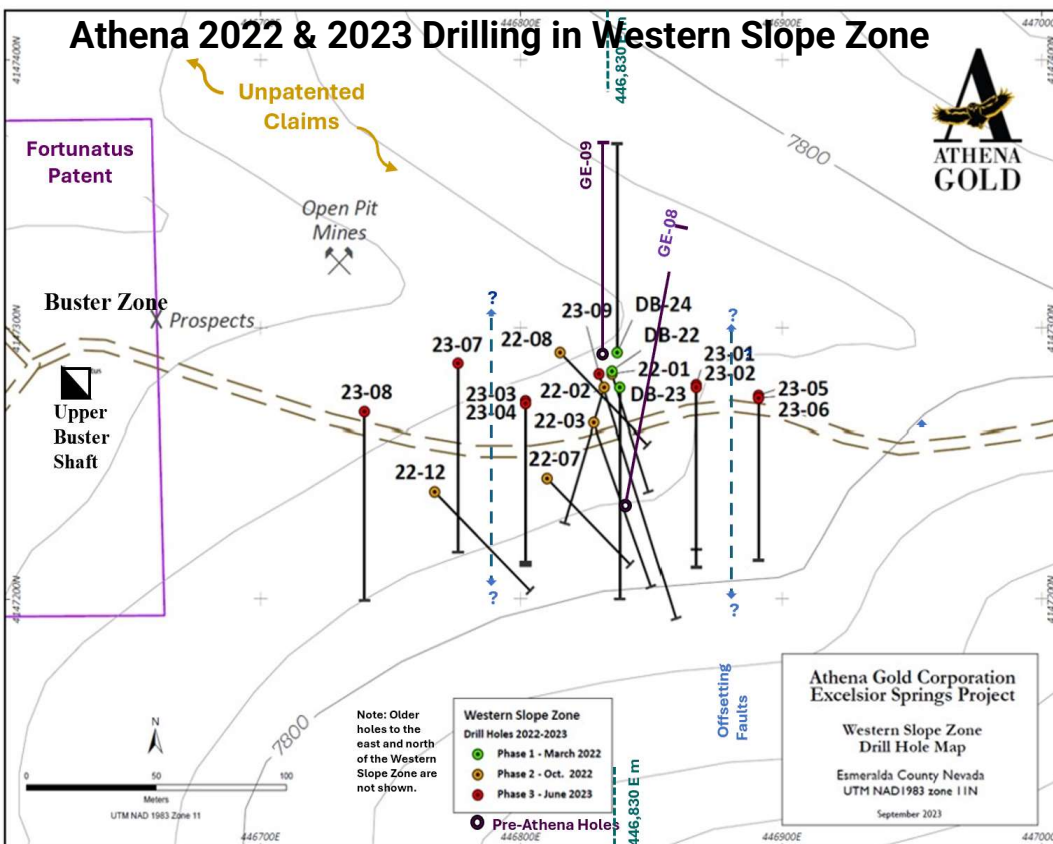
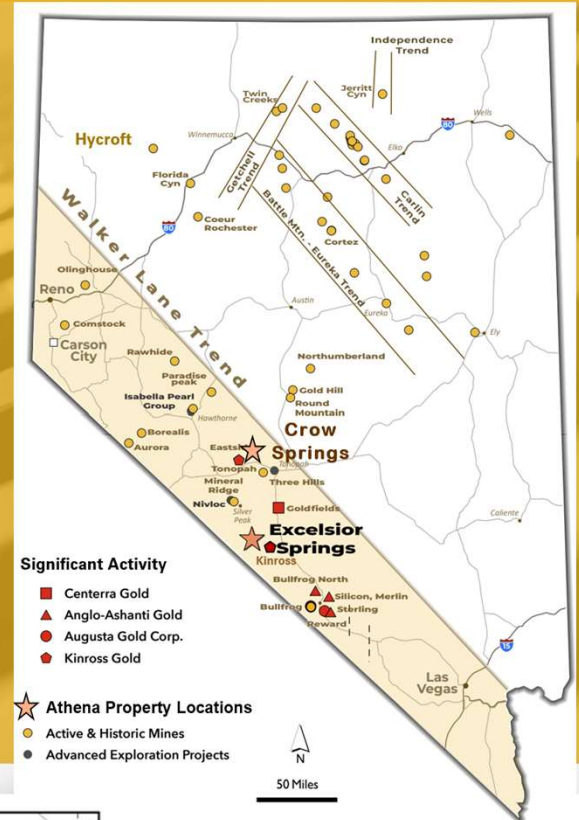
CSE **ATHA**
OTCQB **AHNR**
JANUARY 2024

Advancing Our High-Grade Gold Discovery and a New Copper Prospect in Nevada

Athena Gold Corp. (OTCQB:AHNR; CSE:ATHA) is advancing its Excelsior Springs Gold Project and its Crow Springs Copper Project in the heart of the Walker Lane Mineral Trend.

Athena completed three drill programs at Excelsior Springs and the Project now has 113 holes, of which 67 contain 119 mineral intercepts with at least 20 feet \geq than 0.2 g Au/t. Averages are 33 feet (108 meters) long and grading 1.2 g Au/t. The Fall 2022 program included the discovery of the Western Slope Zone (WSZ) with a hole that returned 33.5 meters at 5.2 g/Au/t and 8.9 g Ag/t. The Company also acquired a prospective porphyry copper project last year that has a strong magnetic geophysical anomaly and is located about 60 miles north of Excelsior Springs.

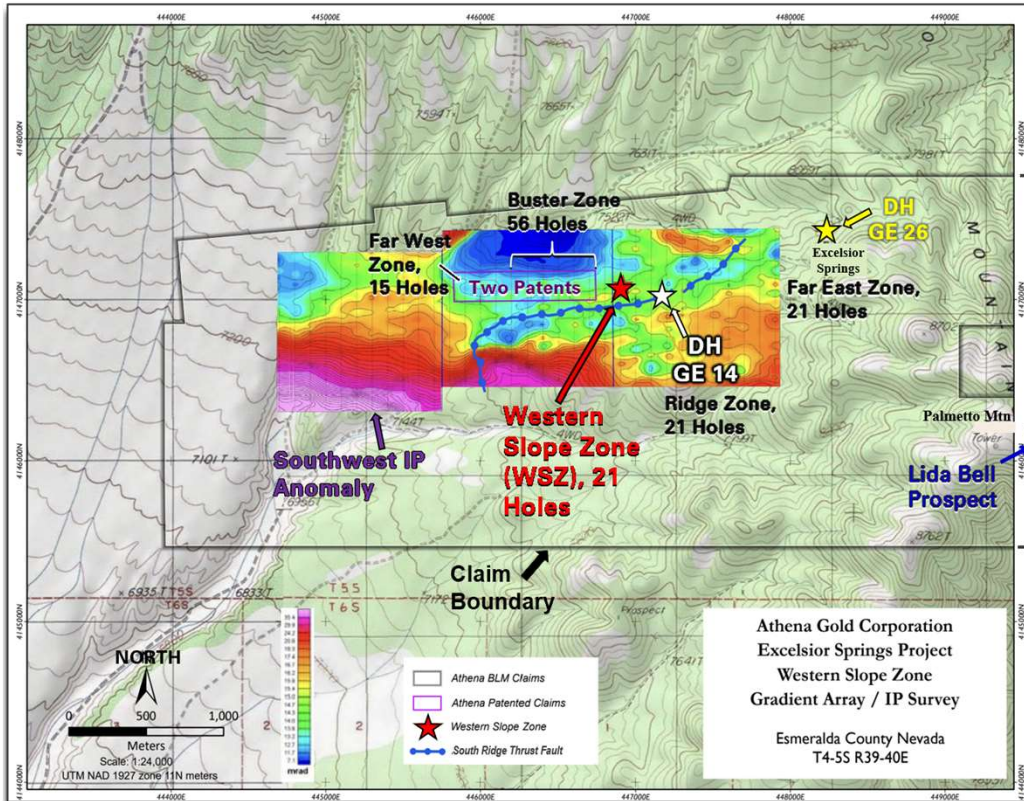
Corporate and Project highlights include committed and highly experienced management and professional teams and projects located in the world's number 1 mining jurisdiction.



Key Mineral Intercepts			
Hole ID	Int. Ft	Au g/t	Depth Ft*
GE-08	20	0.4	100
	20	1.4	190
	40	3.3	305
GE-09	25	1.0	360
DB-23	110	5.2	140
	Incl. 55	10.0	140
	Incl. 35	15.4	140
DB-22	20	0.6	220
	20	1.5	265
	20	1.0	340
22-01	90	6.0	130
	Incl. 35	10.2	130
	45	5.0	255
22-02	50	4.5	135
	Incl. 30	7.3	145
	25	1.2	225
23-01	20	2.2	245
23-03	170	1.0	29

* Top of intercept

Excelsior Springs Land, Targets and IP Geophysics



Leadership

- ▶ **John Power, CEO**
Past president of two funds where he was successful in achieving high ROI's to investors.
- ▶ **John Hiner, Director**
Licensed geologist with a 45+ year exploration history
- ▶ **Dave Beling, PE, Sr. Consultant**
60+ years in mining, current director of NioCorp., Past CEO of Bullfrog Gold.
- ▶ **Ty Minnick, CPA, CFO**
30 years' experience as accountant and controller, including CFO with Bullfrog Gold Corp 2011-2020 and continuing with Athena in 2021.
- ▶ **Castlewood Capital, Corp.**
Capital markets advisor

Capital Structure

January 4, 2024

	Millions
Issued Shares	150.6
Float	30.0
Warrants	40.0
Options and RSU's	5.0
Fully Diluted Common Shares	190.6
Market Capitalization	US \$5.7
	US \$/Share
Current Price	0.038
52-Week Trading Range	0.021 - 0.086



Significant Shareholders

Management	46,000,000
Nubian Resources	45,000,000
Private Company *	10,000,000

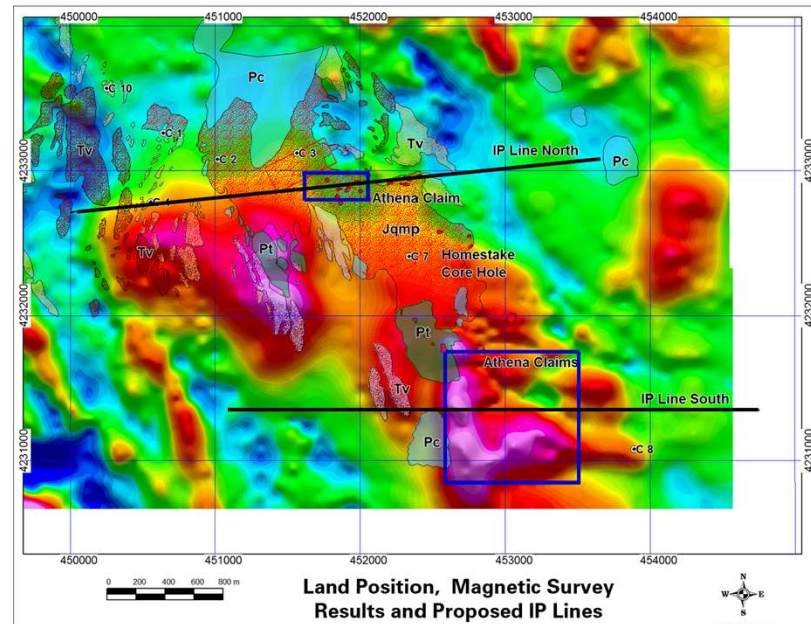
* Controlled by Eric Sprott

OTCQB : AHNR

CSE CANADIAN SECURITIES EXCHANGE : ATHA **

** Trading on the CSE as of October 18, 2021

Crow Springs - Esmeralda County Nevada



Land Position, Magnetic Survey Results and Proposed IP Lines

CONTACT

John Power
T: +1 (707) 291 6198
johncaseypower@gmail.com
2010-A Harbison Dr., PMB #312, Vacaville, CA USA 95687

